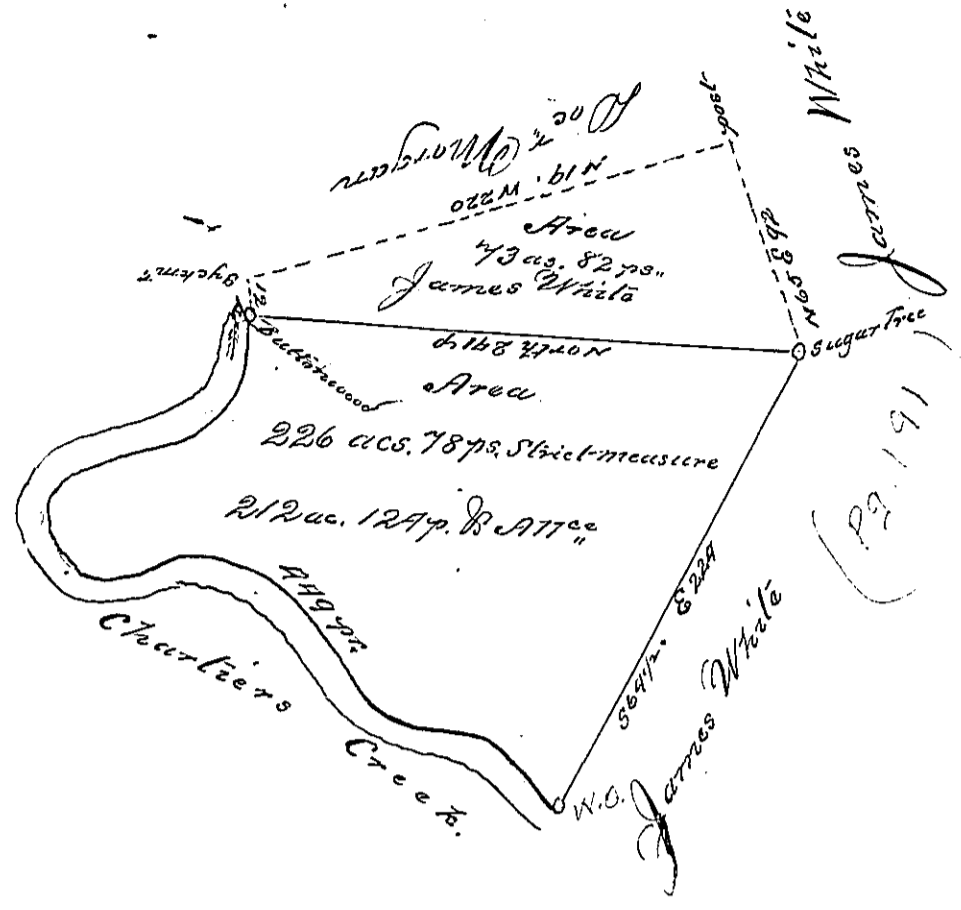


- S. 89. W. 12 to a Buttwood
- N. 79. W. 20
- S. 86. W. 10
- N. 31. W. 36
- N. 45. W. 17
- N. 8. W. 37
- N. 88. W. 32
- S. 31. W. 32
- S. 22. E. 77
- S. 58. W. 21
- S. 25. E. 19
- S. 77. W. 56
- S. 60. W. 21
- S. 20. W. 28
- S. 53. E. 77.6 16
- S. 36. W. 77.0 60
- 0.87.9
- 449



The above is a draught of a Tract of land lying upon the West Branch of Chartiers Creek. Washington County surveyed December the 14th 1784 in pursuance of an Application in the name of John Allman dated May 23^d 1764 containing Three Hundred acres strict measure. The Area of 226^{acs 78.} is claimed by Charles Dummell, under Early Settlement and Virginia Entry, and the one within the dotted lines by James White under Actual Settlement and Virginia Entry. Patented by this Commonwealth

John Lukens Esq^r } Survey^r Genl.
 Presley Nevill }
 Matthew Ritchie } D. J.

300. strict measure equal to 283. Allowance in the whole tract, in that part which is yet to Patent on John Allmans application there is 226.78. strict measure equal to 212.124. with allowance.
 The Course of North 271^{ps.} from the sugar tree to the Buttwood & the distance down the Creek regulated by James Whites Return of 36th Ret^d into Secy Off. 23^d August 1785.

IN TESTIMONY that the above is a copy of the original remaining on file in the Department of Internal Affairs of Pennsylvania, made conformably to an Act of Assembly approved the 16th day of February, 1833, I have hereunto set my Hand and caused the Seal of said Department to be affixed at Harrisburg, this

.....
 Ninth day of April 1891
 Thos. J. Stewart
 Secretary of Internal Affairs